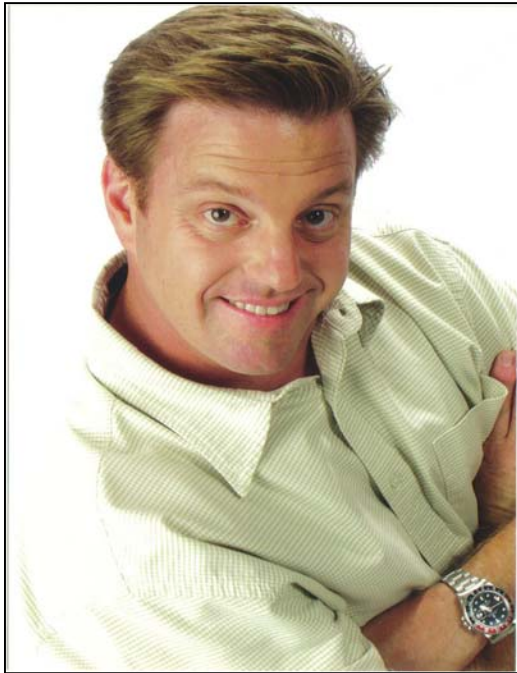


CHIP FOOSE TO SPEAK AT CAA EVENT



Sacramento, Calif. —

Award winning auto designer Chip Foose will be the featured luncheon speaker at the California Autobody Association's 1st Quarter meeting on February 18th at the Disneyland Hotel in Anaheim. Mr. Foose is also the creator and host of the popular television series "Overhaulin" airing on the TLC Network.

In a relatively short career, Chip Foose has created a legacy of designs and accomplishments well beyond his years. Chip was born and raised in Santa Barbara CA., and automobiles were definitely in the blood. Chip's first job was working for his father's company, Project Design. By age twelve, Chip already had five years of experience under his belt, and had painted his first car; a Porsche 356.

Early on, a chance meeting and advice from Alex Tremulus- the designer of the Tucker, was actually Chip's stimulus to attend Art Center, where he majored in automotive product design. Chip graduated in 1990 with honors. Currently Chip is operating Foose Design, an automotive and product design development company. His company specializes in illustration, graphics, ideation model making, surfacing and complete construction of automobiles and automotive related products. These products are available to private individuals, television, film and the automobile manufacturers.

In November of 1997, Chip was inducted into the Hot Rod Hall of Fame at Peterson Publishing's 50th anniversary held at the Specialty Equipment Market Association (SEMA) trade show in Las Vegas, Nevada. This induction made history for both Chip and the Peterson museum, as Chip was and continues to remain the youngest member ever inducted into the Hot Rod Hall of Fame.

2005 opened with Chip being inducted into the San Francisco Rod and Custom Motorcycle Hall of Fame. He recently won the 2005 Ridler Award at Detroit's Autorama for an amazing third time in the last four years. Foose won the prestigious award, one of the most coveted trophies on the show car circuit, for his incredible interpretation of "Impression" - a 1936 Ford Roadster.



www.calautobody.com